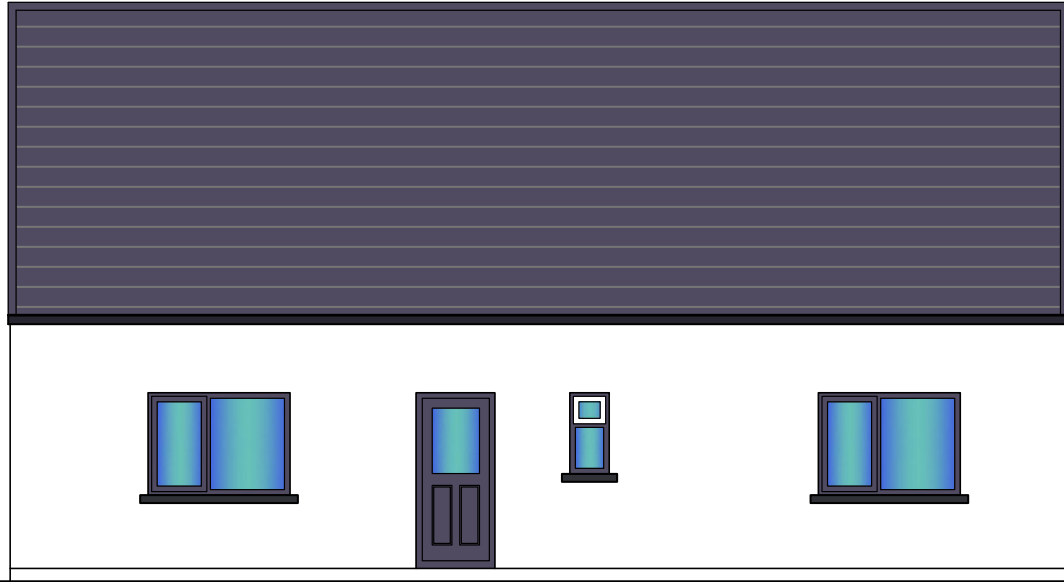
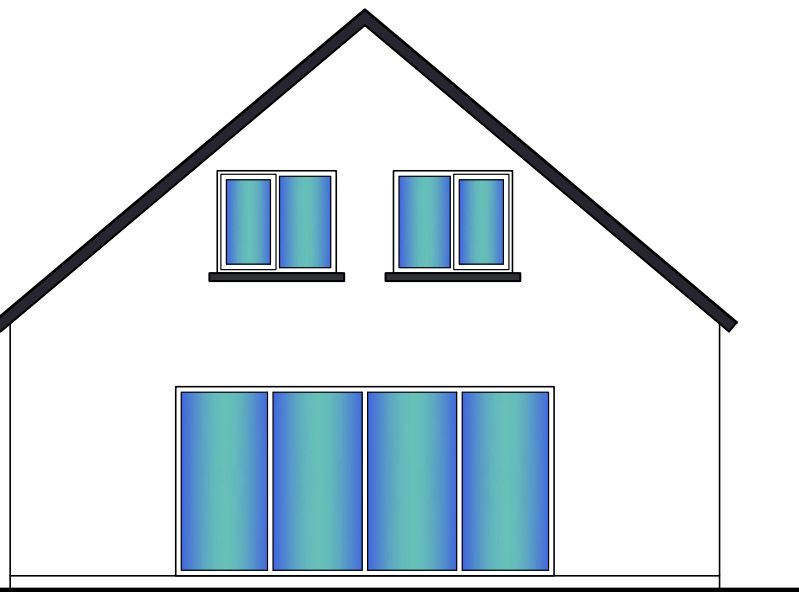


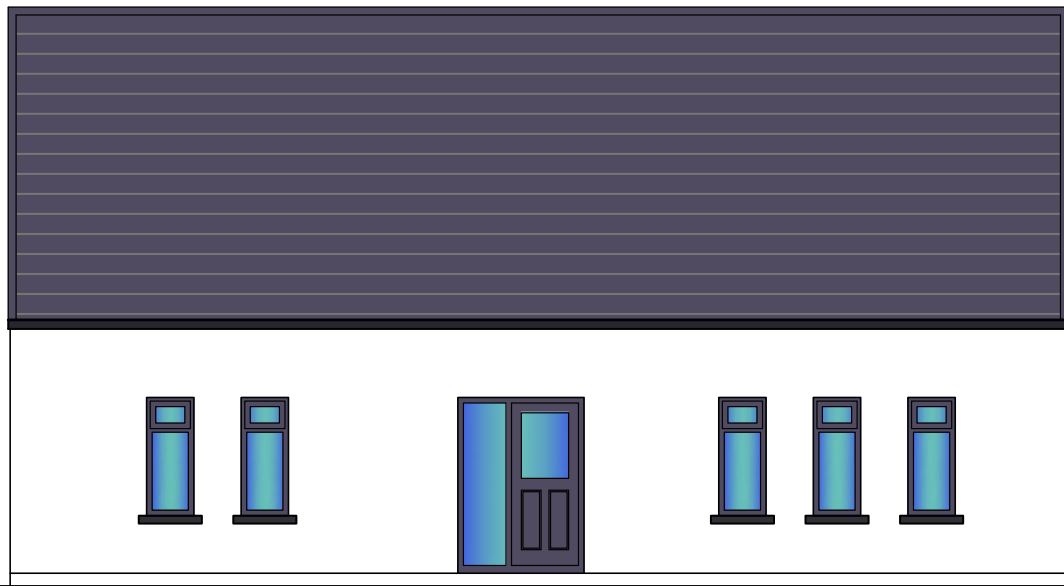
# DRAFT - 4 BED OPTION



E1 Rear Elevation



E2 Side Elevation



E3 Front Elevation



E4 Side Elevation

## OUTLINE SPECIFICATION

- EXTERNAL WALLS:** 100x50 RHS FRAME (REFER TO STRUCTURAL ENG. DETAILS) WITH 50x50 TREATED BATTEN RECEIVING SHIPLAP CLADDING IN SCANDINAVIAN PINE.
- 100mm FRAMING RIGID FOILED BACK INSULATION BETWEEN FRAMES WITH 100mm EXTERNAL EPS EXTERNAL INSULATION
- 50x25 BATTEN TO FORM SERVICE VOID
- INTERIOR LINING IN 12.5mm TIMBER BOARDING / PLASTER BOARD
- INTERIOR WALLS:** 50x50 RHS FRAME (REFER TO STRUCTURAL ENG. DETAILS)
- 50x25 BATTEN TO FORM SERVICE VOID EACH SIDE.
- SURFACE LINING IN 12.5mm TIMBER BOARDING / PLASTER BOARD
- FLOORS:** 50x50 RHS FRAME (REFER TO STRUCTURAL ENG. DETAILS)
- 50mm RIGID FOILED BACKED INSULATION BETWEEN FRAMES WITH 100mm INSULATION FIXED UNDER/OVER.
- 18mm FLOORING GRADE OSB BOARD SUBSTRATE WITH AIR TIGHT MEMBRANE & CLIENTS FINISH FLOATING FLOOR OVER
- ROOF:** KINGSPAN KS500/1000 ZIP IP OR SIMILAR Standing Seam Roof Panel, core depth 147mm
- WINDOWS:** uPVC WINDOWS WITH FIRE ESCAPE/RESCUE SUITABLE OPENING IN ALL HABITABLE ROOMS. U- Value 1.4 or BETTER

## NOTES.

- DRAWING TO BE READ IN CONJUNCTION WITH ALL RELEVANT DESIGNERS/MANUFACTURERS AND ENGINEERS DRAWINGS AND SPECIFICATIONS.
- IT IS THE CONTRACTORS RESPONSIBILITY TO VERIFY OR DETERMINE ALL DIMENSIONS AND LEVELS REQUIRED PRIOR TO COMMENCEMENT OF CONSTRUCTION OR PRODUCTION OF FABRICATION DRAWINGS
- REFER TO STRUCTURAL DRAWINGS & SPECIFICATION FOR STEEL DETAILS
- FOR INSULATION DETAILS REFER TO R-Value / U-Value Calculations
- DO NOT SCALE FROM THIS DRAWINGS. USE FIGURED DIMENSIONS ONLY.
- ANY CONFLICTS REQUIREMENTS WITH SITE, PLANNING CONDITIONS/REGULATIONS ETC. TO BE REPORTED TO THIS OFFICE IMMEDIATELY
- DRAINAGE PLANS - SITE SPECIFIC.
- ELECTRIC & SERVICE LAYOUT TO AGREED WITH CLIENT AND SUBJECT TO LOCAL REQUIREMENTS

PROJECT: **Dormer unit** DRG TITLE: **ELEVATIONS**

DRG No: **SK(01)01**

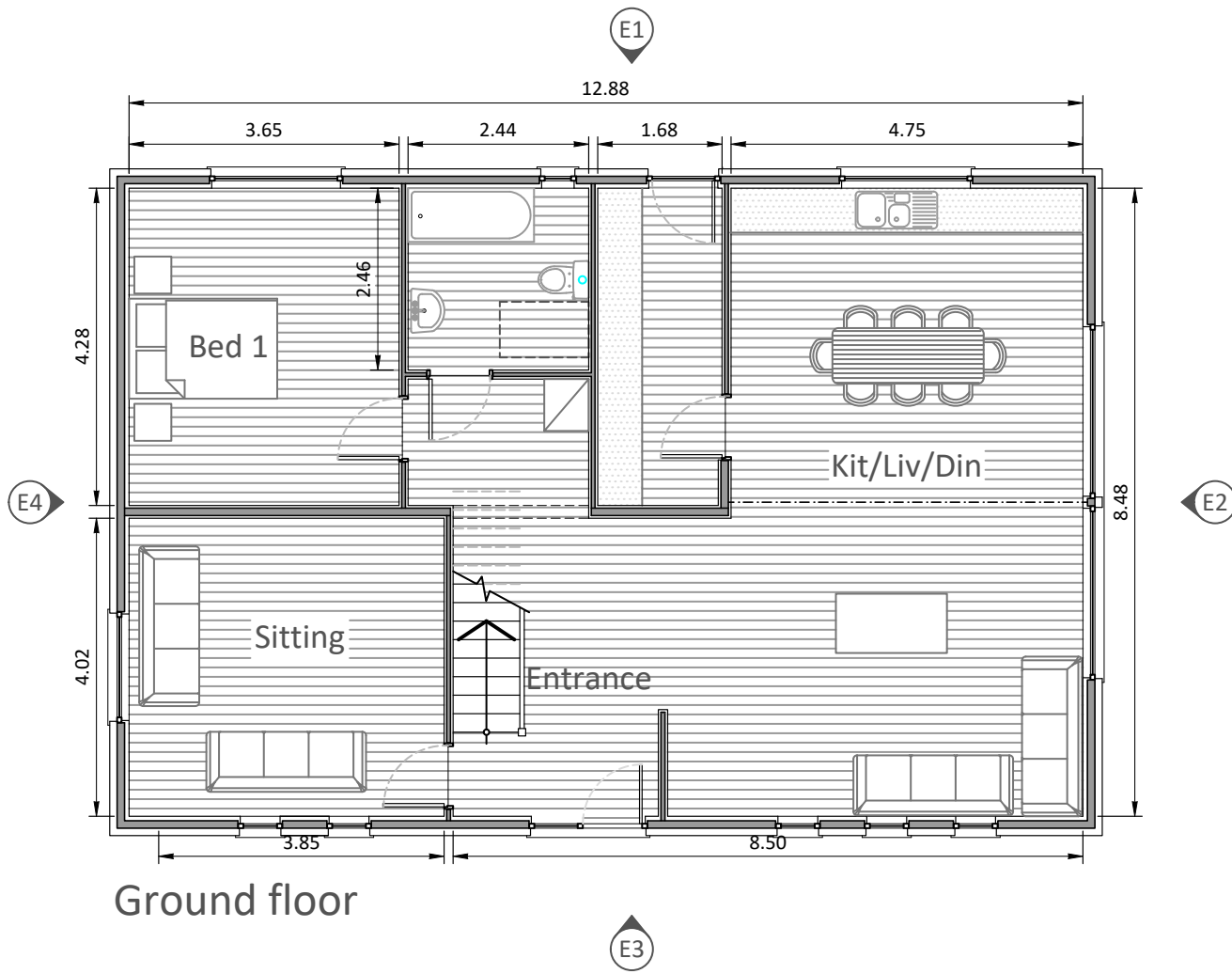
SCALE: **1:100**

DATE: **29th July 2020**

DRG BY: **M. Gillespie**



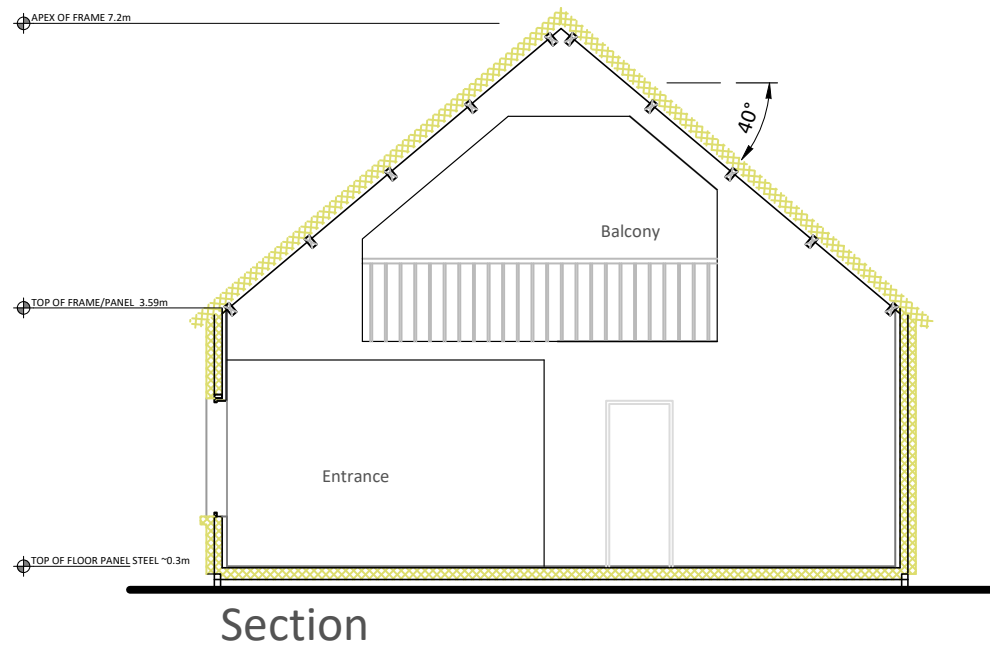
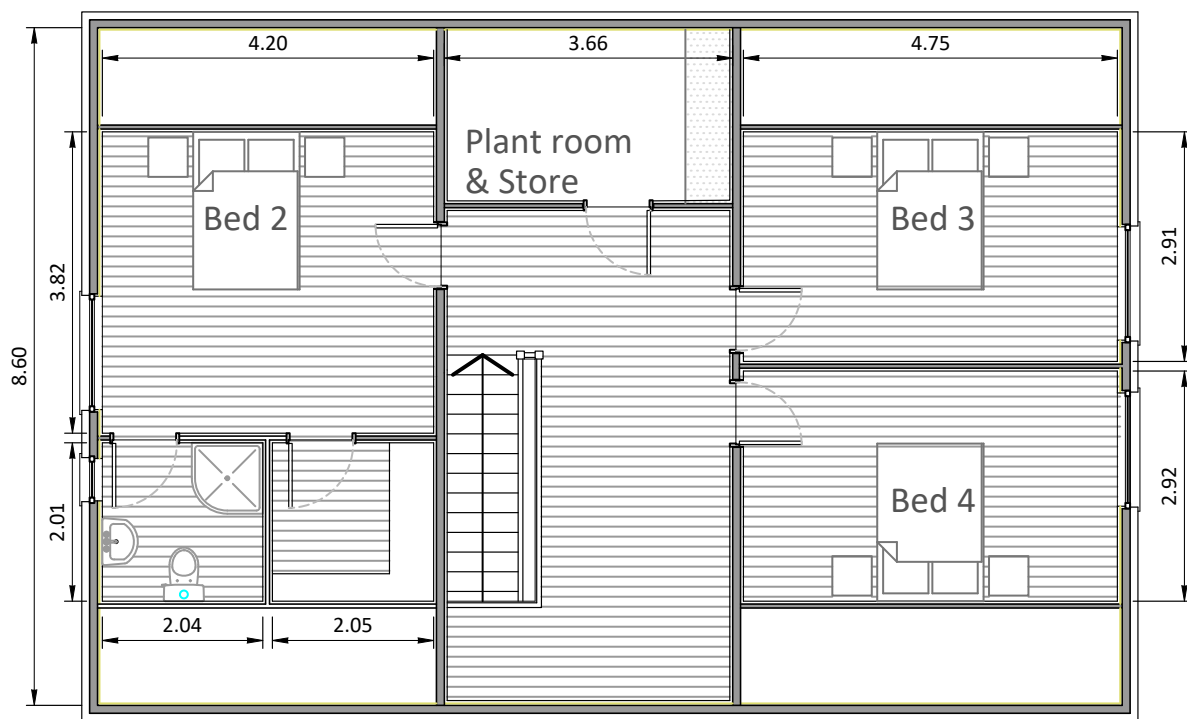
# DRAFT - 4 BED OPTION



## Schedule of areas (m<sup>2</sup>)

Ground floor gross	109.18
First floor gross	85.94
<b>Total gross Floor area</b>	<b>195.12</b>

OPEN PLAN Kit./Liv./Din.	44.05
ENTRANCE	11.14
BED ROOM 1	15.61
BED ROOM 2	16.07
BED ROOM 3	13.82
BED ROOM 4	13.82
BATH ROOM	5.99
UTILITY	10.87
LANDING	18.44
EN SUITE	4.09
WARDROBE	4.11
PLANT ROOM	7.79



## NOTES.

- DRAWING TO BE READ IN CONJUNCTION WITH ALL RELEVANT DESIGNERS/MANUFACTURERS AND ENGINEERS DRAWINGS AND SPECIFICATIONS.
- IT IS THE CONTRACTORS RESPONSIBILITY TO VERIFY OR DETERMINE ALL DIMENSIONS AND LEVELS REQUIRED PRIOR TO COMMENCEMENT OF CONSTRUCTION OR PRODUCTION OF FABRICATION DRAWINGS
- REFER TO STRUCTURAL DRAWINGS & SPECIFICATION FOR STEEL DETAILS
- FOR INSULATION DETAILS REFER TO R-Value / U-Value Calculations
- DO NOT SCALE FROM THIS DRAWINGS. USE FIGURED DIMENSIONS ONLY.
- ANY CONFLICTS REQUIREMENTS WITH SITE, PLANNING CONDITIONS/REGULATIONS ETC. TO BE REPORTED TO THIS OFFICE IMMEDIATELY
- DRAINAGE PLANS - SITE SPECIFIC.
- ELECTRIC & SERVICE LAYOUT TO AGREED WITH CLIENT AND SUBJECT TO LOCAL REQUIREMENTS

PROJECT: Dormer unit DRG TITLE: FLOOR PLANS



DRG No: SK(01)02  
SCALE: 1:100  
DATE: 29th July 2020  
DRG BY: M. Gillespie